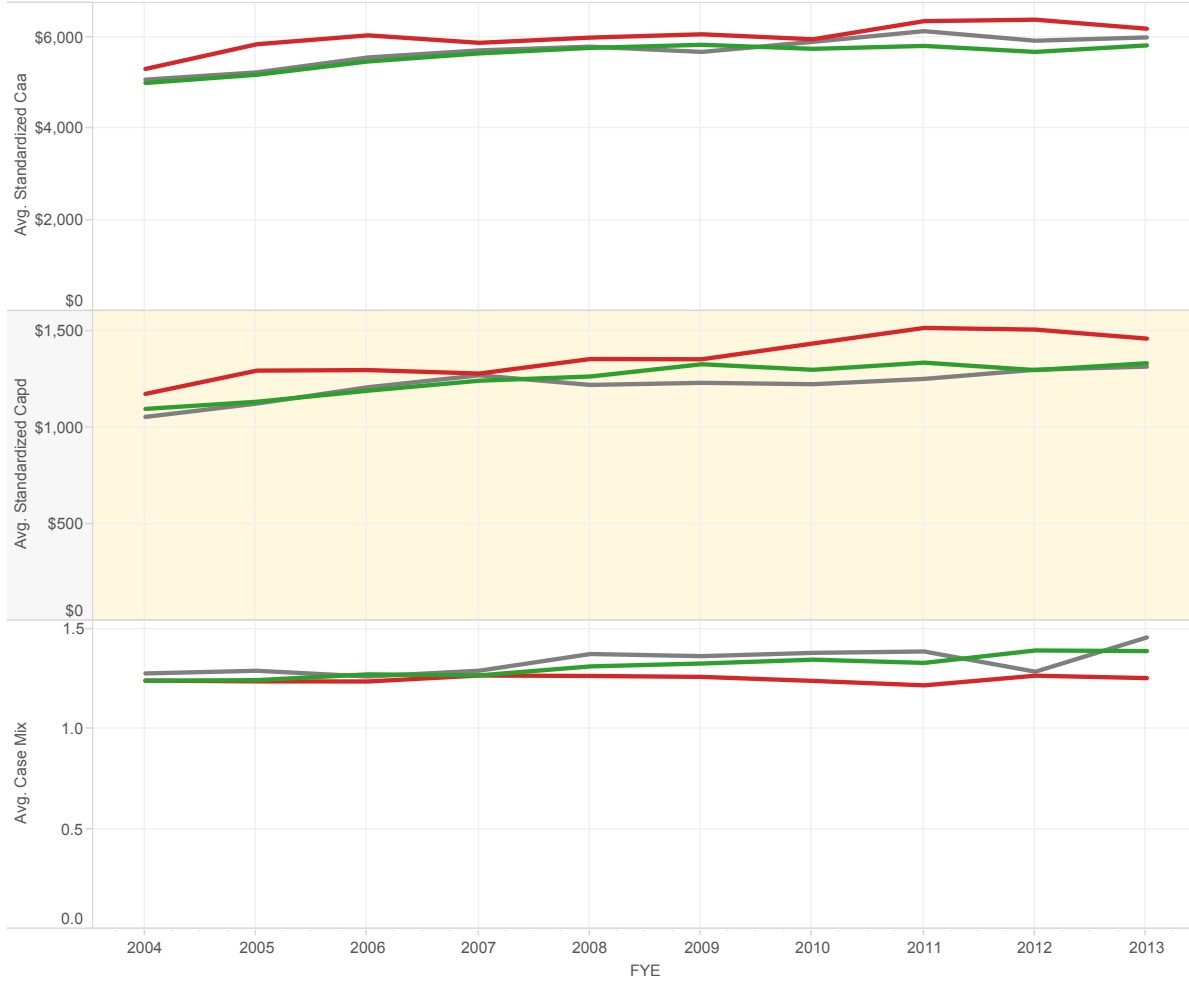


Cost and Case Mix
(CAPD - Cost per Adjusted Patient Day)
(CAA - Cost per Adjusted Admission)



■ 4% or Greater
 ■ <-1% Profit
 ■ Between 4% Profit and 1% loss

- OM Group**
- 4% or Greater
 - <-1% Profit
 - Neutral

Metropolitan Statistical ..
All

- LIP**
- - LIP

Type of Control (Groups)

- For Profit
- Government
- Not-for-Profit

County Group
Multiple Values