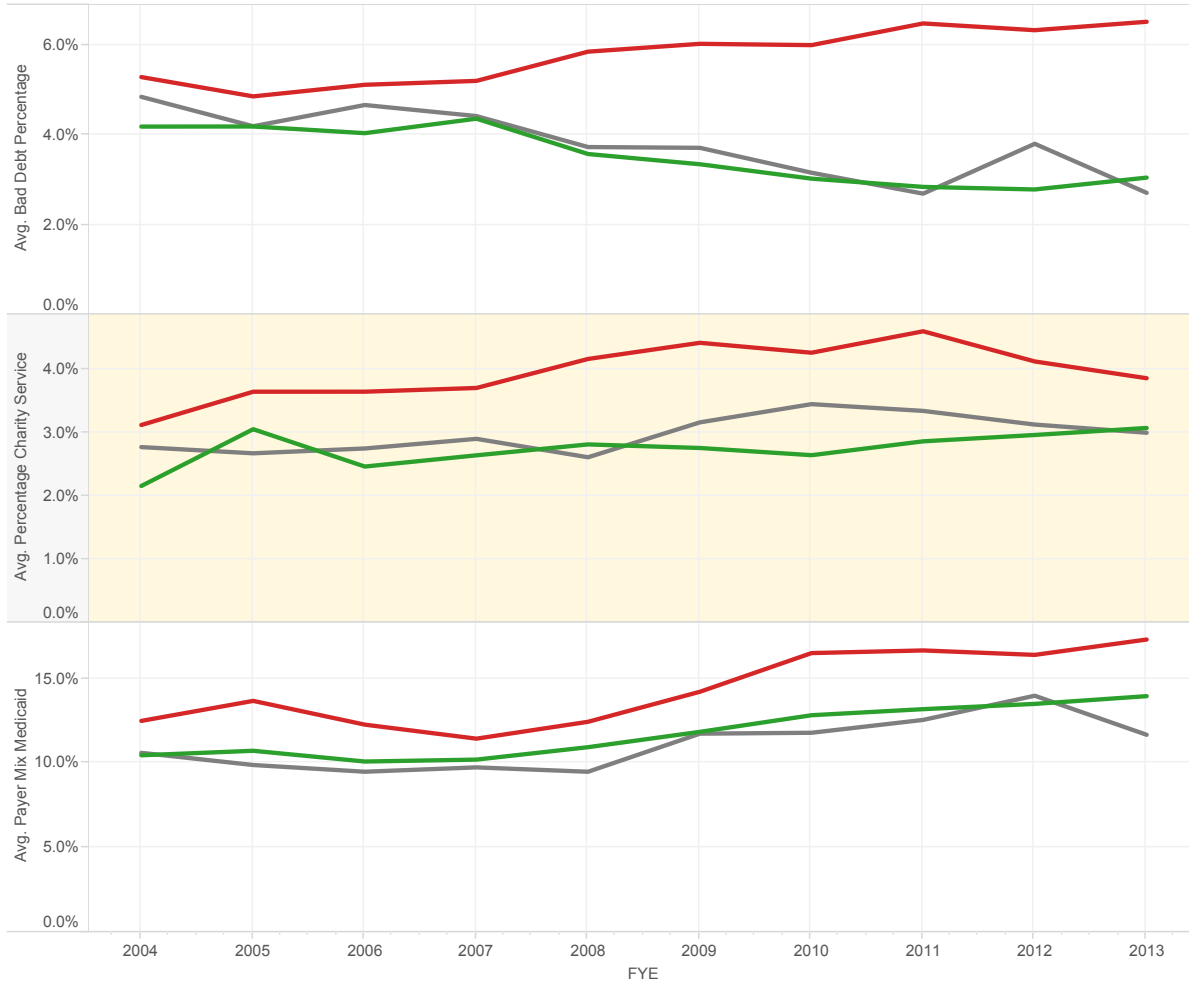


# Indigent Payer Mix



■ 4% or Greater     
 ■ <-1% Profit     
 ■ Between 4% Profit and 1% loss

- OM Group**
- 4% or Greater
  - <-1% Profit
  - Neutral

**Metropolitan Statistical ..**  
All

- LIP**
- - LIP

- Type of Control (Groups)**
- For Profit
  - Government
  - Not-for-Profit

**County Group**  
Multiple Values